



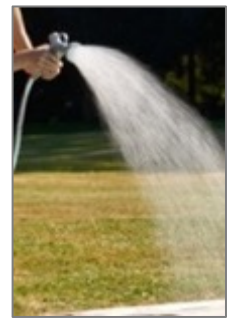
EQUIPMENT	Mixer for hot and cold Hand shower with automatic stop Foot wash faucet
MATÉRIAL	Brushed stainless steel 316L marine grade Hand shower in anodized aluminium Stainless steel screws A4 marine grade
DIMENSIONS	Structure : width 10 cm x aside 5 cm x height 100 cm Shower hose: 150 cm Hauteur entre base et mitigeur : 90 cm Height between base and foot wash : 50 cm Base in stainless steel with 4 holes (Ø 12 mm) : 15x15 cm
WEIGHT	8,5 kg
PACKING	1 box : 110 x 28 x 15 cm Poids : 10 kg
OPTIONAL	Winter cover Borne Riva Duckboard 80 x 80 cm



Mixer



Foot wash faucet

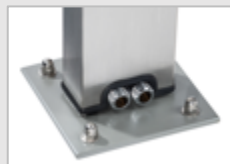


Hand shower spray

## INSTALLATION GUIDE

Borne RIVA is delivered with the possibility of making the connections either to the rear base or from below.

Borne GRAPHITE is delivered with 4 studs in stainless steel (Ø 10 mm, length 96 mm).



Connections at the rear base.



Connections from below



4 studs in stainless steel