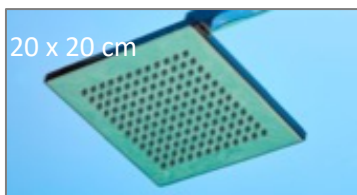


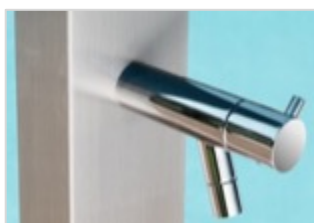


EQUIPMENT	Mixer for hot and cold Foot wash faucet
MATÉRIAL	Brushed stainless steel 316L marine grade Stainless steel screws A4 marine grade
DIMENSIONS	Structure : width 10 cm x aside 5 cm x height 220 cm Height between base and mixer : 100 cm Height between base and foot wash faucet : 60 cm Base in stainless steel with 4 holes (Ø 12 mm) : 15x15 cm
WEIGHT	17 kg
PACKING	1 box : 230 x 53 x 14 cm Weight : 20 kg
OPTIONAL	Winter cover Duckboard 80 x 80 cm

OPTIONAL SHOWERHEADS



Mixer

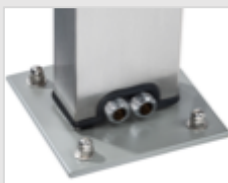


Foot wash faucet

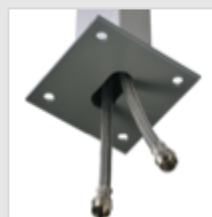
INSTALLATION GUIDE

Shower SQUADRA is delivered with the possibility of making the connections either to the rear base or from below.

Shower SQUADRA is delivered with 4 studs in stainless steel (Ø 10 mm, length 96 mm).



Connections at the rear base.



Connections from below



4 studs in stainless steel